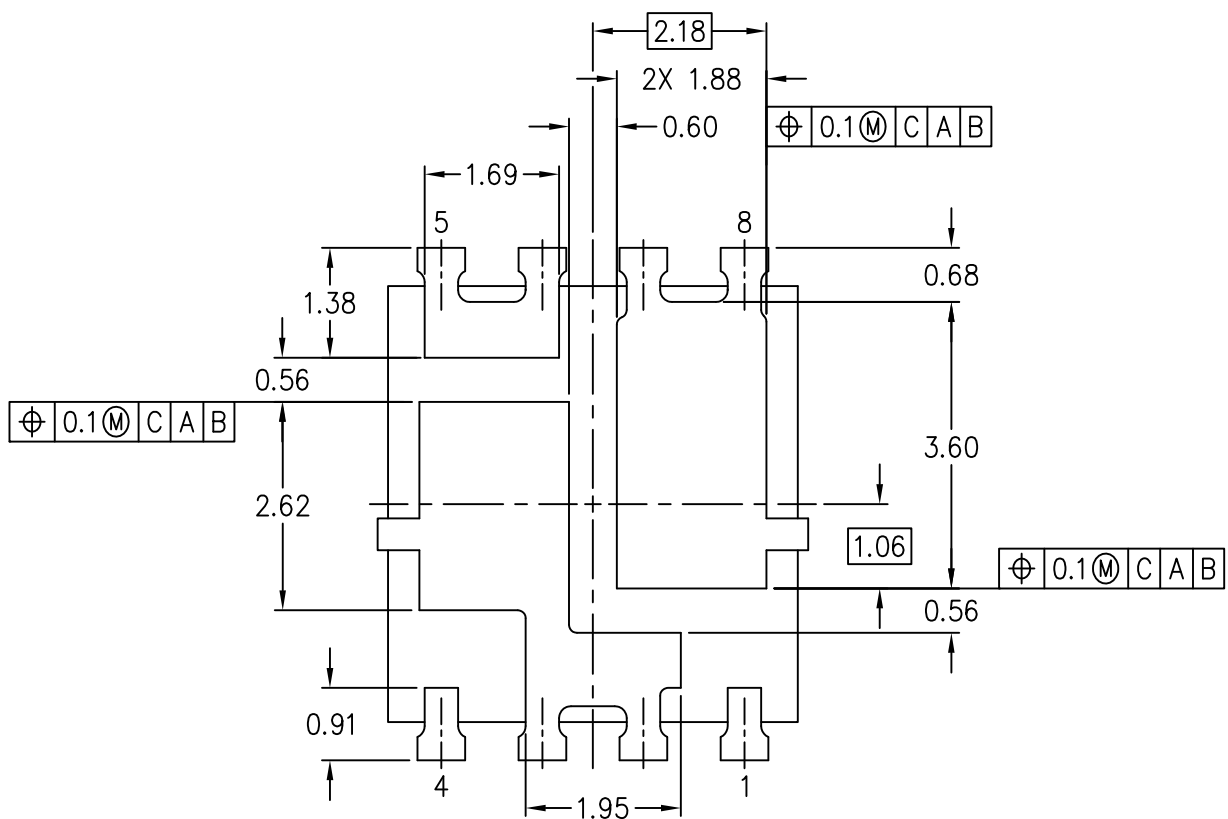
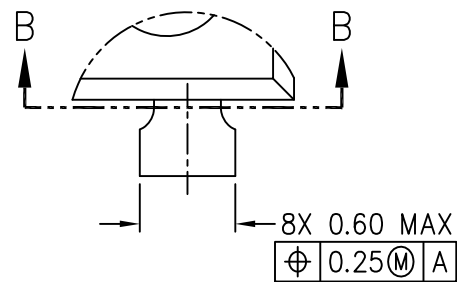
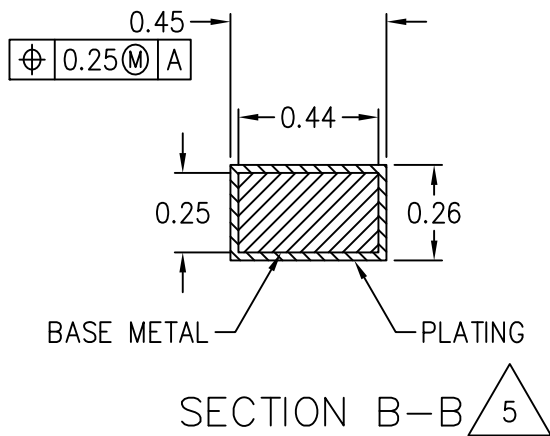
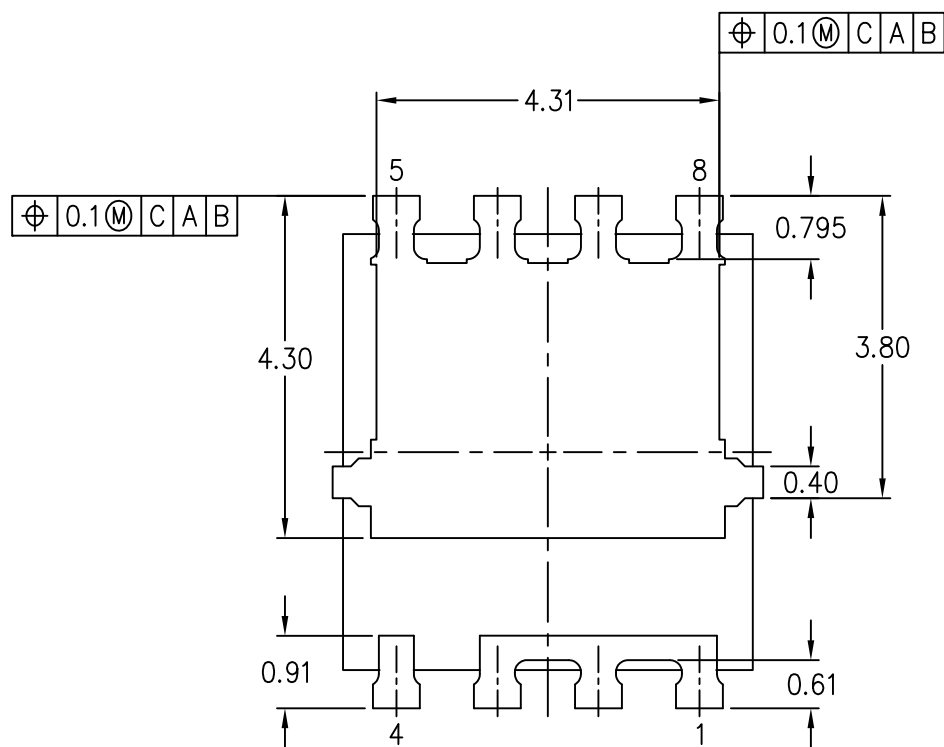


THIS *REGISTERED OUTLINE* HAS BEEN PREPARED BY THE JEDEC JC-11 COMMITTEE AND REFLECTS A PRODUCT WITH ANTICIPATED USAGE IN THE ELECTRONICS INDUSTRY; CHANGES ARE LIKELY TO OCCUR.

SHEET
1 OF 6



VARIATION A



BOTTOM VIEW

VARIATION B





NOTES:

1. DIMENSIONING AND TOLERANCING PER ASME Y14.5–2009.

2. ALL DIMENSIONS ARE IN MILLIMETERS (ANGLES IN DEGREES).
DIMENSION TOLERANCING TO BE ± 0.10 UNLESS OTHERWISE NOTED.

3 DIMENSION DOES NOT INCLUDE MOLD FLASH, PROTRUSION OR GATE BURRS.
MOLD FLASH, PROTRUSION OR GATE BURR SHALL NOT EXCEED 0.15 MM PER END.

4 DIMENSION INCLUDES INTERTERMINAL FLASH OR PROTRUSION. INTERTERMINAL
FLASH OR PROTRUSION SHALL NOT EXCEED 0.25 MM PER SIDE.

5 DIMENSION DOES NOT INCLUDE DAMBAR PROTRUSION. ALLOWABLE DAMBAR
PROTRUSION SHALL BE 0.15 MM TOTAL IN EXCESS OF THE DIMENSION
MAXIMUM MATERIAL CONDITION.

6 DIMENSION IS DEFINED AS THE DISTANCE FROM THE SEATING PLANE TO THE LOWEST
POINT OF THE PACKAGE BODY.

7 PIN 1 IDENTIFIER MUST BE LOCATED WITHIN THE INDEX AREA INDICATED.

8 THE LOCATION AND SIZE OF EJECTOR MARKS ARE OPTIONAL.

STP (3D) FILE RECORD
3D FILE NAMES MAY EXCEED LENGTH REQUIREMENTS FOR SOME SOFTWARE TOOLS.

STP FILE NAME	DATE	ITEM NUMBER
MO-341A_PQFP-F8[10]_I127-R5p51x6.54Z1p1	OCT 2019	11-959
MO-341B_PQFP-F8[10]_I127-R5p51x6.54Z1p1-VAR B	AUG 2023	11-1030

TASK GROUP CONTRIBUTORS

INFINEON

CHANGE RECORD

IF THE CHANGE INVOLVES ANY WORDS ADDED OR DELETED (EXCLUDING DELETION OF ACCIDENTALLY REPEATED WORDS), THE CHANGE IS TO BE INCLUDED BELOW. PUNCTUATION CHANGES MAY OR MAY NOT BE INCLUDED.

INITIAL ISSUE: A	DATE: OCTOBER 2019	ITEM NUMBER: 11-959
------------------	--------------------	---------------------

CHANGE RECORD HISTORY:

INITIAL ISSUE: B	DATE: AUGUST 2023	ITEM NUMBER: 11-1030
------------------	-------------------	----------------------

LOCATION:	CHANGED FROM:	CHANGED TO:
SHEET 2	LEAD WIDTH METAL WAS 0.42 LEAD WIDTH PLATING WAS 0.43	LEAD WIDTH METAL NOW 0.44 LEAD WIDTH PLATING NOW 0.45
SHEET 3		ADDED VARIATION B
SHEET 4 & 5		ADDED TERMINAL PATTERN